

Stab

- From 12 m. (40 ft.) up to 40 m. (130 ft.) yachts.
- Full electric.
- Start and stop is immediate.
- Minimal space needed. Easy installation on new builds and refit.
- So quiet you'll forget about it. Even at zero speed.
- Minimal power required.
- CMC Marine quality.

Trim

- Integration with Stab for perfect control.
- Full electric, super fast.
- Just 0.15 Kw. required.
- Light and robust (Trim300 weight 8 kg. (18 lbs.), stainless steel structure.
- From 30 up to 60 cm. wide.

Stab

	25		30		40		50	
Voltage	230VAC, 1ph, 50/60Hz 24Vdc (Opt.)		230VAC, 1ph, 50/60Hz 24Vdc (Opt.)		400VAC, 3ph, 50/60Hz		400VAC, 3ph, 50/60Hz	
Motor Rated Power (each)	2 kW		3 kW		7 kW		8 kW	
Available Fin Size (m ²)	0,5	0,65	0,7	0,9	1,15	1,5	1,7	1,9
Dimensions (ø cm. * h cm.)	28 x 23,6		35 x 34,1		41 x 34,9		44 x 53,1	

Trim

	300	400	500	600
Blade Size	30cm.	40cm.	50cm.	60cm.
Weight (each)	8kg. 18lbs.	10kg. 22lbs.	12kg. 26lbs.	14kg. 31lbs.
Motor Rated Power	0,15kW	0,15kW	0,15kW	0,15kW
Power Supply	12 ÷ 36 VDC.			

Enjoy Your Yacht!

Milano (Italy) – Pisa (Italy) – London (UK) – Ft Lauderdale (USA)

Mallorca (Spain) – Côte d'Azur (France) – Umago (Croatia) – Istanbul (Turkey) – Piraeus (Greece) – Hong Kong – Dubai
www.wavelessmarine.com | info@wavelessmarine.com – service@wavelessmarine.com

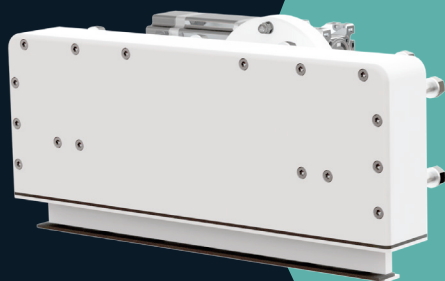




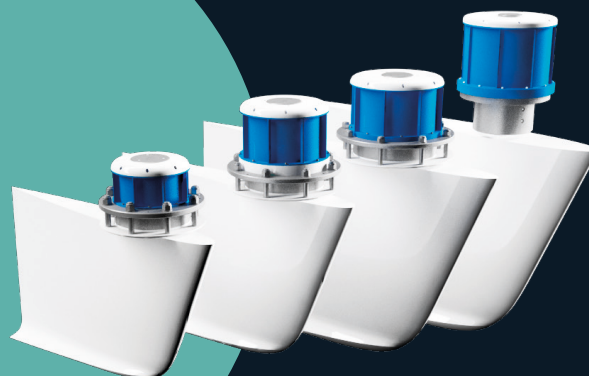
Waveless is the new way to experience your yacht!

The technology of superyachts, the experience and quality of **CMC Marine**, the leader in stabilization, now available for your boat. **Waveless Stab** is the new generation of electric fin stabilizers: fast, ultra compact, low noise, low power, top quality.

From 12m up to 40m.



Trim 300 / 400 / 500 / 600



Stab 25 / 30 / 40 / 50

